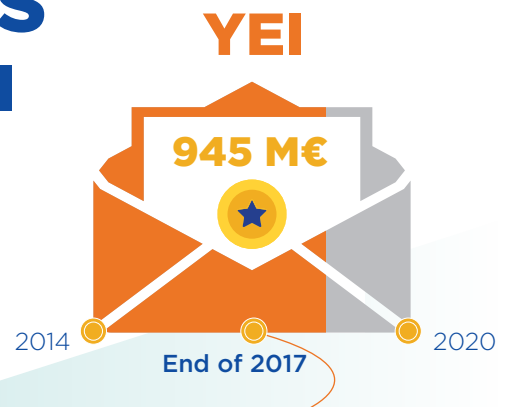


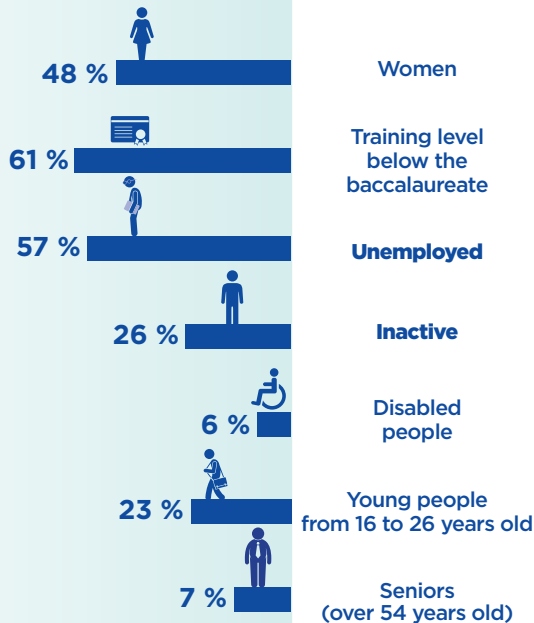
KEY FIGURES of ESF and YEI programming in France



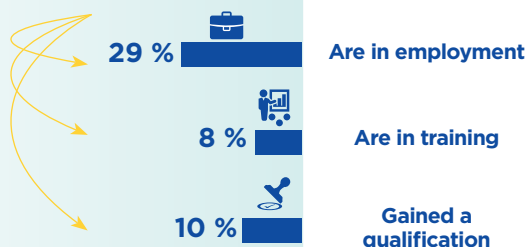
2 594 M€ committed
49% of ESF programming

13 393 funded projects

1 802 297 participants
taking part in an ESF operation:



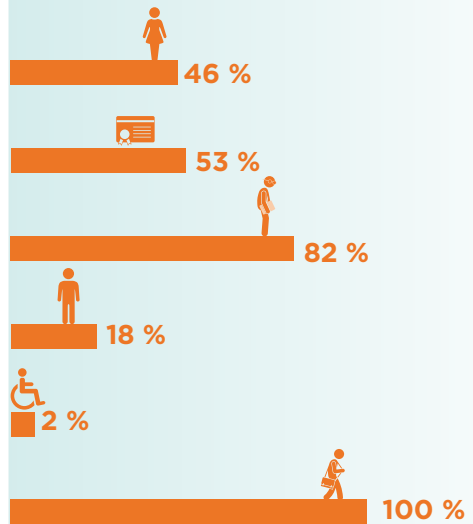
Among these participants
1 498 594 exited the operation.
Upon leaving :



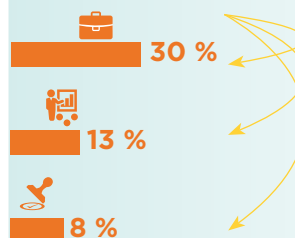
676 M€ committed
71% of YEI programming

1 367 funded projects

358 420 participants
taking part in an YEI operation:



Among these participants
291 227 exited the operation.
Upon leaving :



ANALYSIS of the IMPLEMENTATION

ESF and YEI in France


at the mid-term of the 2014-2020 programming
(July 2018)


ESF


A delay related to the adoption of programmes recovered

With a ESF mid-term programming rate of **49 %** the delay caused by the programmes' late adoption has been recovered.

The level of programming is well balanced between the thematic objectives (TO)

47 % TO 8 
(Promoting sustainable and quality employment and supporting labour mobility),

46 % TO 9 
(Promoting social inclusion, combating poverty and any discrimination)

52 % TO 10 
(Investing in education, training and vocational training for skills and lifelong learning).

The regional programs, mostly adopted in the last months of 2014, show an average programming of 52%. On average, DROM (outermost regions) programmes are lagging behind with an average programming rate of 36%.


YEI

A programming dynamic to be maintained

The programming rate stands at **71%**, including programmes' additional provisions at the end of 2017. Some regional Managing Authorities (MA) opted for intensive programming from the very beginning of the period in order to ensure full consumption of funds. This explains the high rate even after complementary allocation. This dynamic is positive for the end of the programming period.

DETAIL OF PROGRAMMING (end of 2017)

1 398 M€ committed programming

51 % 
represent 10 317 operations



873 M€ committed programming

53 % 
represent 2 719 operations




323 M€ committed programming


36 % 
represent 357 operations



443 M€ committed programming (125 M€ for the DOM)

67 % 
represent 451 operations

233 M€ committed programming

86 % 
represent 916 operations

Data for Guadeloupe, French Guiana, and Martinique not available